

AdeptSight 3



POWERED BY ADEPT ACE

Adept ACE™ (Automation Control Environment) is software for managing Adept's entire product portfolio of robots and controls. This functionality is accessed through a user-friendly interface.

Adept ACE software is built on a modular framework. ACE PackXpert and AdeptSight are extensions of Adept ACE with built-in programs, APIs, and application templates. This software greatly reduces the cost of deploying your applications.

Leveraging Adept's core strengths in motion control and vision guidance, Adept ACE is open, extendable, and scalable.

Adept ACE, with its seamless integration of Adept equipment, is the leader in real-time control for flexible automation solutions.



AdeptSight™ 3 is intelligent software designed to perform vision guidance and inspection applications through a single interface. The wizards in AdeptSight walk you through the configuration and calibration of equipment to build complex applications with vision guidance capabilities. You can build a standalone vision inspection application, build a vision-guided conveyor-tracking application, or integrate with ACE PackXpert™. Use the power of V+ to deploy your vision guidance application.

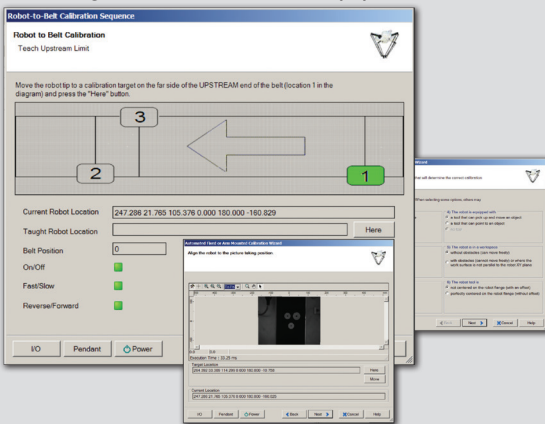
Product Features and Benefits

- Single point of control for vision guidance and inspection applications
- Wizard-based user-friendly interface to calibrate and teach the robots
- Tightly integrates with ACE PackXpert to manage an entire packaging line
- Simultaneous processing of up to four cameras
- Supports “vision-on-the-fly”
- High-speed and high-quality inspection of parts with tight tolerances
- Scalable vision-guidance solution that supports up to four Adept motion controllers

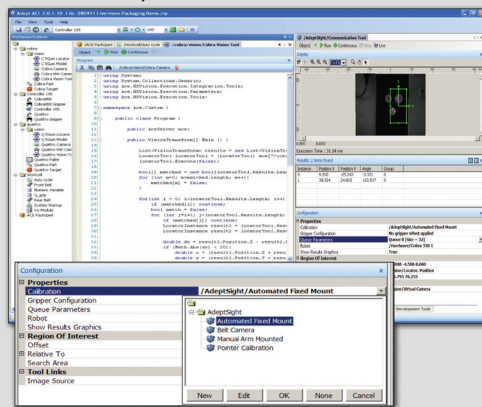
Manage your vision guidance and inspection applications.

Steps to deploy your vision application:

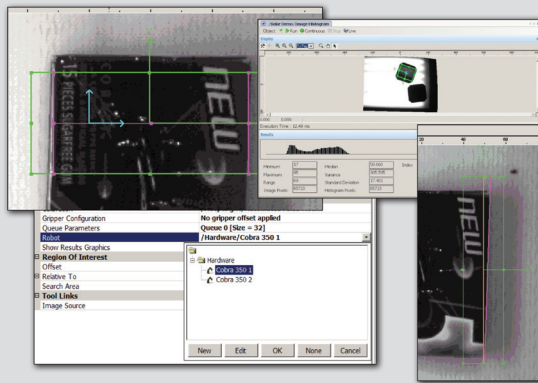
1. Configure and calibrate the equipment



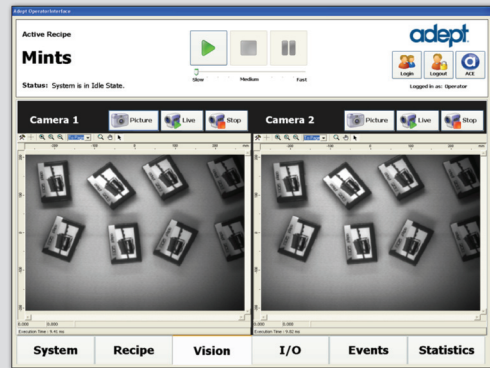
2. Teach the process



3. Optimize your application



4. Start your vision inspection application



Fast and Accurate Parts Location

- Model-based object location
- Multi-model processing: Simultaneously locate and sort multiple objects
- Advanced disambiguations between very similar objects
- Translation repeatability: 1/40th of a pixel
- Rotation repeatability: 0.01 degree
- IEEE-1394 or GigE camera support

Advanced Inspection Capabilities

- Inspection tools (Blob Finder, Calipers, Edge Locator, Pattern Locator, Frame Builder, and Arc Finder)
- Image processing tools (includes Histogram, Image Processing, Sharpness, and Sampling Tool)
- Color option adds Color Matching Tool, enabling color processing for more inspection tools

System Requirements:

- Adept SmartController™ CX motion controller
- V+ Operating System, version 17.0 D or later

Computer Requirements:

- Core2Duo 2.0GHz or better with 2GB RAM or more
- Microsoft Windows 7 (32-bit), XP with SP2, or Vista
- IEEE-1394 or GigE support (Vision)

Recommended:

- Adept SmartVision™ EX machine vision processor (optimized to run AdeptSight)

More Information:

www.adept.com/products/vision/vision-guidance/adeptsight/general



Adept Technology, Inc. 5960 Inglewood Drive, Pleasanton, CA 94588
Tel: 925-245-3400 Fax: 925-960-0452 Email: info@adept.com
www.adept.com

Specifications subject to change without notice.

©2011 Adept Technology, Inc. ALL RIGHTS RESERVED. The information provided in this communication or document is the property of Adept Technology, Inc. and is protected by copyright and other intellectual property laws. In addition, any references to any Adept Technology, Inc. products are the marks and property of Adept Technology, Inc. [and may be registered trademarks]. All other trademarks or tradenames are the property of their respective holders.